

Kempsford

(with Whelford, Dunfield and Dudgrove)

Parish Newsletter

July & August 2021

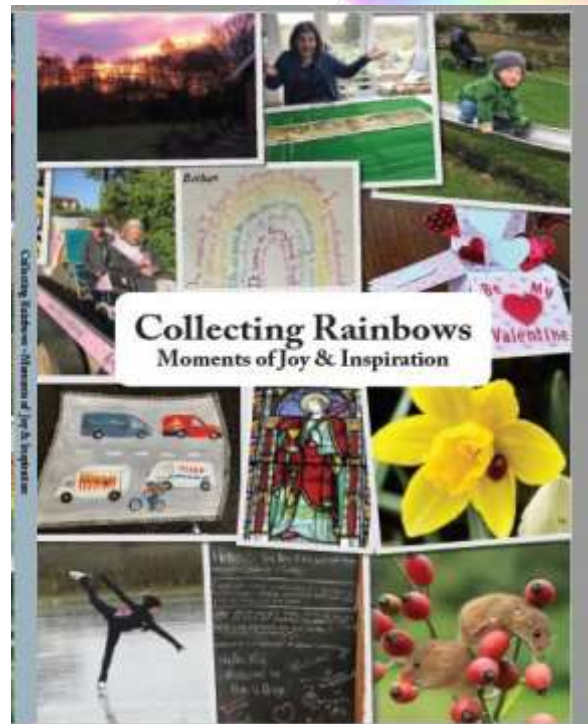


Book Launch Event

Friday 9th July
6.00pm- 7.30pm
The George
Kempsford



*Kindly supported by Paul
and Ruth May*



- ✧ Celebration drink
- ✧ Soft drink for children and drivers
- ✧ Special Purchase Price for Launch Day

Please book in advance if you are planning to eat at The George after the event

KEMPSFORD PARISH COUNCIL

Clerk: Teresa Griffin, Winterwood, Whelford, Fairford, Glos. GL7 4EB

Tel: 01285 713691 Email: clerk@kempsfordparishcouncil.net

www.kempsfordparishcouncil.net

Parish Councillors	Email	Tel.
Mr Mark Strange (Chair)	markstrange@kempsfordparishcouncil.net	01285 810635
Mr Tony Williams (Vice -Chair)	tonywilliams@kempsfordparishcouncil.net	01285 810628
Mr Jerry Stokes	jerrystokes@kempsfordparishcouncil.net	07834 369645
Mrs Christine Nugent	christinenugent@kempsfordparishcouncil.net	01285 810306
Mr Philip Nickson	philnickson@kempsfordparishcouncil.net	07801 295331
Mrs Karen Saunders	karensaunders@kempsfordparishcouncil.net	01285 713155
Mr John O'Connell	johnoconnell@kempsfordparishcouncil.net	01285 810512

PARSIH COUNCIL MEETING DATES

Tuesday 20th July 2021 at 7.45pm, Kempsford Village Hall

Tuesday 17th August 2021 at 7.45pm, Kempsford Village Hall

A Polite reminder - Please can dog owners who walk the public footpath through the allotments gardens on the corner of Whelford Road and Top Road pick up after their dogs. Waste bins are provided at the start of the cycleway on the Whelford Road and at the entrance to the path leading from Top Road to the High Street.

Thank you.

SEPTEMBER 2021 NEWSLETTER

Copy for the above Newsletter to Teresa Griffin by

MONDAY 23RD AUGUST 2021 PLEASE

Email: clerk@kempsfordparishcouncil.net

KEMPSFORD VILLAGE HALL

Calling Kempford Residents!

The Village Hall committee would like some input from you, the village residents, as to what events you would like to be made available or hosted at the Village Hall.

We will compile a list of the most popular ideas and see what is achievable to host, and then update you accordingly.

This can only happen if we have your input, so regardless of the idea, please let us know.

How to get in touch:

By email

villagehallbookings@kempford.net

Or by letter/note through my door

Mel Denny

9 Tuckwell Road

Kempford

Kempsford Village Hall booking for the month

	Sunday	Mondays	Tuesdays	Wednesdays	Thursdays	Fridays	Saturdays
AM		10:00 - 11:00 Pilates Rona Bennett 01865 820754		12:00 - 13:00 Pilates Janice Koo			9:00 - 11:00 Yoga Charlie McKenna
PM		15:30 - 16:30 Rainbows Caroline Gooch			12:00 - 14:00 Post Office		
Evening			20:00 - 21:00 Yoga Charlie McKenna (Except 3rd Tues- day of month)	19:00 - 20:00 Pilates Rona Bennett 07885 991673	15:30 - 17:00 Brownies Philippa Griffin 01285 810754/ 0779 3562704		
	20:00 - 21:00 Yoga Charlie McKenna		19:45 - 21:45 Parish Council Meeting (monthly, 3rd Tuesday)	20:00 - 21:30 Village Hall Meeting (monthly, 2nd Wednesday)	20:00 - 21:00 Meditation Shilpa		

KEMPSFORD VILLAGE HALL COMMITTEE MEMBERS

- | | |
|--------------------------------------|--------------------------------|
| * Hannah Dickens (Chair) | * Mark Britt (Vice-Chair) |
| * Jo Colson (Treasurer) | * Joy Cross (Secretary) |
| * Mel Denny (Bookings Secretary) | * Amy Durban (Health & Safety) |
| * Kate Collins | Louise Jeffrey (Safeguarding) |
| Karen Saunders (Parish Council Rep.) | |

** Denotes Trustee*

To contact any Committee Member email infokempsfordvillagehall@kempsford.net

New members are always welcome!

JOIN OUR TEAM

Gloucestershire

net.

PAID AND UNPAID POSITIONS AVAILABLE

LEADERS IN CHARGE

Are you wanting to help us to transform the lives of young people across Gloucestershire? Do you share our values? Can you act as a role model for our young people and your colleagues? Our Leaders in Charge, paid and unpaid roles, are qualified and experienced individuals, who can take the lead on the planning and delivery of our services for young people- who are passionate and committed to creating a safe space for young people to learn, grow and participate in a fun, inclusive and empowering environment. We are looking for innovative leaders to join our Youth Work team and help us to inspire and grow.

YOUTH SUPPORT WORKER

Similarly to the Leader in Charge role, we are looking to recruit paid and unpaid Youth Support Workers who are passionate and committed to helping transform the lives of young people across Gloucestershire. Are you able to offer young people a listening ear? Are you a confident communicator who can work individually and in groups? Are you willing to contribute to the planning and delivery of various forms of Youth Work? Do you have any experience or skills that would help our young people as they learn to grow into happy, healthy young adults? If you share our values, then we'd love to hear from you. Contact Stacey to discuss the roles and how to apply.

CONTACT US NOW:

phone: 07563022314

@glosyouth

www.youthsupportteam.co.uk

**CITIZENS ADVICE
TRUSTEE – STROUD AND COTSWOLD DISTRICTS**

Do you want to help the community where you live, work or study and gain valuable skills?
Do you want to make sure your family and neighbours get the advice they need now and in the future?

We are seeking new Trustees to join our Board and are specifically looking for people with a background in marketing, communications and IT.

Time commitment –

6 x Board meetings a year and approximately one other meeting a month with associated paperwork.

Deadline: 31st July 2021

For more information please contact Diane Elsdon, Business Manager by email at diane.elsdon@ca-scd.org.uk.



KEMPSFORD COMMUNITY SPEED WATCH GROUP

ARE LOOKING FOR MORE VOLUNTEERS

Please contact Andy Lee on alee32@btinternet.com

For further information

**Mr & Mrs James Arkell cordially invite you
to a Summer Evening Garden Party
in the gardens of Whelford Mill**

7.00pm – 10.00pm 6th August 2021



Tickets £20 each to include:

Welcome drink

BBQ food with side salads

Desserts

Live music from

Presto

and Barry & Jean



A bar offering wine, beer and soft drinks, in return for donations

This is an adult only event in aid of church funds

For tickets contact:

Annie Ellis (Whelford) 01285 712516

(ann.ellis.whelford@gmail.com)

Ann O'Hara (Kempsford) 07760272224

ST MARY'S KEMPSFORD WITH ST ANNE'S WHELFORD

Contact details for the parish

Rev Kim Brown - 01285 810954 or revkimbrown10a@gmail.com

Lay Preacher – Rob Mitchell 01285 712821

Church wardens: Elizabeth Emberson dizylizzie@sky.com

or Keith Howlett - 01285 712268 keith.howlett1@btopenworld.com

or there is a Facebook page The 5 Villages

July/August 2021

Despite the struggles of our nation with the continuing pandemic and the inconsistencies of the summer weather, there are signs all around us of hope and new life. **I'm constantly amazed at how creative and adaptive people are**, finding ways to celebrate and gather joyfully with good humour in these complex circumstances. Couples planning and replanning their weddings and new parents rearranging christenings many times over, show me that our human desire to come together and celebrate (safely of course) with those we love is undiminished. The church is also planning for new life and celebration in many ways this year (subject to Covid guidelines), here are some of the events and activities we are planning:

Youth Club

We are holding 4 taster sessions for the new youth club we hope to launch in the village hall and they take place on Wednesdays 23rd and 30th June and 7th and 14th July, from 5.20pm to 6.30pm at the village hall, for school years 4-8. (If your child will be coming into year 4 this September, please do bring them along to these sessions) There will be games, crafts and snacks, top 5 biscuit tasting league tables and much more. The taster sessions are free and we would love to see you!

Book Launch

Two of our PCC members, Ann and Myra, have worked with many in our villages and school to gather memories of the good things that have helped us keep going through the pandemic and combined them all into a wonderful book. The book will be launched in the garden at The George on Friday 9th July at 6pm and be for sale that evening at a special launch price of £8 per copy. Please do come along and celebrate this unique village event.

Caring for the earth

The church is working towards achieving an eco-award that helps us focus on taking care of our planet and the land we have much more intentionally. Our family service group is making the churchyard a better home for birds and insects with new planting and birdboxes. At our next service on Sunday 18th July at 4pm we will think about water and the blessing clean water is to us, and install a bird bath and hedgehog drinking station. We will also be offering christening outdoors with a symbolic sprinkle of water at this service if required, so if you or any of your family members of any age would like to be christened, please do get in touch with me.

Graveyard Improvement

One of the things we need to do for our eco award is improve the graveyard for wildlife and for the villagers who enjoy the peaceful space there.

To do this, we will be asking people to reduce the number of plastic and ceramic items on the graves, and in exchange we will give a free bag of bulbs to plant on each grave so that there are beautiful flowers blooming there all year round. If anyone is unable to plant these themselves due to mobility issues, we will offer a free planting service. I know the graveyard can be a very emotive issue but we all want to honour the memory of our loved ones in the most beautiful space we can offer them, and we hope this plan will improve the environment there for all.

Fun by the River

On Friday 6th August from 7pm, the Arkell family invite us to their beautiful gardens by the river at Whelford Mill for an evening BBQ with drinks and musical entertainment from Presto! and Jean & Barry, in aid of church funds. Tickets are £20 each and can be obtained from Annie Ellis in Whelford via ann.ellis.whelford@gmail.com tel: 712516, or **from Ann O'Hara in Kempsford on 07760 272224. It will be a wonderful evening and we would love to see you there.**

Late Summer Green Fete

On Saturday 25th September from 12pm the church will hold a traditional fete in the **churchyard, with all the usual fun and stalls, and with a 'green' twist this year. There will be a brass band, teas and cakes, a dog show, children's games and sports day races, face painting, lots of ideas of how we can care for our planet and all kinds of stalls and entertainment. Please do save the date in your diary to come along and please contact me if you'd like a stall.**

It looks like being a fun and busy summer with lots of opportunities to gather together safely; I hope to see you at something!

Love Rev Kim

St Mary's, Kempford with St Anne's, Whelford
Church Services

Sunday 4 July	9.30 am Kempford	Holy Communion
Sunday 11 July	8.30 am Whelford	Holy Communion
	9.30 am Kempford	Service of the Word
Sunday 18 July	9.30 am Whelford	Holy Communion
	4pm Kempford	Family Service
Sunday 25 July	9.30 am Kempford	Holy Communion
Sunday 1 August	9.30 am Kempford	Holy Communion
Sunday 8 August	8.30 am Whelford	Holy Communion
	9.30 am Kempford	Service of the Word
Sunday 15 August	9.30 am Whelford	Holy Communion
Sunday 22 August	9.30 am Kempford	Holy Communion
Sunday 29 August 5 th Sunday	9.30 am Castle Eaton	Service to be taken by Canon Rev John Swanton

Dates for your diary

Morning Prayer continues to take place via The 5 Villages Facebook page every weekday at 8am.

St Mary's is open every Wednesday and Saturday and St Anne's is open on Fridays for prayer and reflection.

Thank you for your continued generous donations to the Food bank. Collection boxes are **placed in the porches at both St Mary's and St Anne's and are** emptied regularly. Items that are particularly in short supply at the moment are: sugar, fruit juices, toilet paper and tinned fruit



FRIENDS OF FAIRFORD & LECHLADE COMMUNITIES

(Reg. Charity No: 1180059)

YOUR LOCAL CHARITY

erving Fairford, Lechlade and the surrounding villages.

(Formerly League of Friends of Fairford Hospital)

News and Information from your Community Friends



APPOINTMENT OF GENERAL MANAGER

We are pleased to announce that Kelly Smith has been appointed General Manager of Community Friends with effect from 7th June. After graduating from university Kelly has worked in the third sector for many years and is passionate about campaigning, increasing awareness and bettering the lives of others. Kelly lives in Southrop with her husband and young family and they both have become highly involved with village life through the village hall and the local school. She is really looking forward to meeting everybody involved with the Community Friends and to helping the local community.

CYCLE CHALLENGE

In June, July and August, David Nash from Fairford will be cycling around as many surrounding villages to the Fairford and Lechlade area to raise fund for Friends of Fairford & Lechlade Communities (Community Friends). Both David and his wife Alison have been regular volunteers for the House-to-House event, but as this has not been able to take place for a second year, David has chosen to support Community Friends for his cycle ride. He has set himself the challenge and target of visiting over 50 local villages and hamlets – and will take some pictures along the way. If you would like to donate please do so via David's Virgin Money Giving site: <https://uk.virginmoneygiving.com/DavidNash32/1>

Your support would be very much appreciated for David and for Community Friends.

VOLUNTEER DRIVERS NEEDED URGENTLY

Our team of volunteer drivers provide a lifeline to many in our community who need to get to their medical appointments at the GPs and hospitals. With appointments opening up again we urgently need more drivers to help with this vital community service. We ask our volunteers to complete a DBS check as this service provides much needed support and assistance to many vulnerable people in the community. Car running costs are paid for.

If you think you can help please contact Val Harvey on 07540 798226 or email Val at valharvey56@gmail.com

COVID-19 COMMUNITY FUNDING SUPPORT – REMAINS OPEN FOR APPLICATIONS

The Community Friends' Covid-19 Support Fund established to provide financial support to local organisations, charities, volunteer groups, families and individuals who have been impacted by Covid-19 remains open for applications. To date the fund has provided grants exceeding £77,000 to local individuals, organisations and charities.

Please refer to our website for details of how to apply and the criteria we use to assess applications (www.friendsoffairford.org.uk).

With thanks for all your support. Please refer to our website www.friendsoffairford.org.uk for more information about the Community Friends

Graham Hewitt, Chair

Friends of Fairford & Lechlade Communities (Reg. Charity No. 1180059)

Kempsford Angling Club

Last season ended on the 14th of March, the final few months of which were quite wet and rather cold. Some fish were caught; however, my best was a chub of four and a half pounds.

In fact, chub seem to be the predominant species available, although there is a fair mix of general coarse fish plus the odd trout.

It should be noted, that access to the river is strictly limited to members of the Angling Club, and there is no public right of way.

Next season begins on the 16th of June, when annual subscriptions are due.

For further advice and information, please call Jim Hussey on 810446.



Cotswold Canals Trust

Working for Restoration

ALEX FARM - Call for Volunteer Carpenters

In our eastern-end depot at Alex Farm, we have a well-equipped woodworking workshop where large pieces of hardwood are cut to make a variety of components, from parts for lock paddle gear for Phase 1B, to commemorative benches sold to raise funds for the Trust. What we don't have, is enough skilled woodworkers to meet the demand placed upon the Alex Farm team.

If you have experience of working with large woodworking machines such as table and band saws, or are interested in being trained to use them as part of a small team of volunteers which meets on Tuesdays and Thursdays, we'd really love to hear from you. Please drop Paul Williams a note on <mailto:paulw.wks@gmail.com> or call John Allan on 07798 684092



Walk 6: Lakes by Yoo permissive paths

Distance **4.84mi** Moving Time **1:22:55** Pace **17:07/mi**



This month's walk starts at the Whelford Pool Nature Reserve, in fact it is the same start as Walk 3 for the first 10 mins or so. At the new bird hide go to the left and get to the bridge where you turn right as before (see Walk 3 on the Parish Council website for a better description of this first section). Soon on the right you will see a new bridge (pic 1), together with new posts and fencing. This will take you over to what is labelled Kingfisher Lake on the Strava map. Even if you don't have time to do the full walk, it is worth going to have a look at the new path complete with the 2 new benches. Pic 2 shows the view across the lake - in the distance you will see the latest LbY offerings. This was taken from Bench 2, whose seat is quite high off the ground! They have planted plenty of saplings so this is going to be beautiful in a few years time. The path goes around the lake and a fence ultimately prevents you from straying too near the properties. In fact you are now very near the right bend on the Dudgrove Lane. Carry on towards Dudgrove. I did this on the LbY track, which eventually fizzles out to a path. I believe looking at the online OS map this is a public footpath, but if you prefer, walk the short distance up the Dudgrove Lane until you get to the left turn down the muddy track whose name escapes me. This track eventually takes you to Lechlade coming out near the roundabout close to the garden centre. There is a path parallel to this muddy track and Pic 3 show a view of some of the older LbY homes across what was the old Bowmoor sailing lake. After say 5 mins there is a right turn off the muddy track into the LbY permissive area.



I went to a public meeting with LbY in Lechlade some years ago when the question of public footpaths (or rather the loss of them) was hotly debated. This permissive area was the LbY's "compensation" - and thanks to the efforts of some locals we have now got the public footpaths back albeit through a posh housing estate. Anyway you are now in a big wild flower meadow, which hopefully Pic 4 gives you some idea. You can either go straight ahead and then turn left at the field boundary or find tractor tracks to go diagonally to the left. At this stage and for much of the middle part of the walk, I should say there are few landmarks to explain the route (so it may be a good idea to tell someone roughly where you think you are going!). In the far diagonal corner of the meadow you should find a bridge (Pic 5) which takes you into the LbY arborum. Again the trees are quite young and the grass is long so I couldn't find any obvious path. If it helps, the Coln and Thames are on your right, Lechlade is straight ahead, and LbY (and the muddy track) on your left. You should go past their veg gardens and hen coup. Now you will cross a stream and find yourself in a wood. Good luck in here, there are not any obvious paths and the one I found had chest high stingers for a while. Still I had seen the "Permissive Path" sign on a post or two for encouragement. Hopefully you will find a bridge that will bring you back onto the muddy track quite near to the Roundhouse. Turn left and soon you will be near the GWT Roundhouse Reserve. and then the back entrance to LbY (Pic 6) - now you are back in civilisation - security cameras and posh wooden public footpath signs.



If you found navigating through the new woods difficult, this is equally difficult in a different way. I think the signs to Bowmoor Hill (don't know where the hill is) may be the best help, it is certainly no good saying "Walk past the house with the Porsche outside" for obvious reasons! You are trying to find the path that takes you to the Conservation lake and then back to Whelford Pool NR. The path entrance is obscured by some overgrown trees - another of the many challenges of this walk.

Richard Caswell



Village Organisations & Useful Contacts

Church Wardens	Elizabeth Emberson	Email:dizzylizzy@sky.com	
	Keith Howlett		01285 712268
Church Choir	Mrs Cathy Stanford		713033
Church Bells	Iris Lewis		810770
Kempsford School	Mr Richard Mendum	(Head Teacher)	810367
Chairman of School Governors	Darren Jeffrey	chair@kempsford.gloucs.sch.uk	810875
Farmors School	Mr Matthew Evans (Head)		712302
Kempsford Village Hall Bookings	Mel Denny	villagehallbookings@kempsford.net	0734 1901986
Whelford Village Hall & bookings	Sue Griffin	374croft@gmail.com	712979
Kempsford Angling Club	Mr J Hussey		810446
Kempsford Brownies	Philippa Griffin	https://www.girlguiding.org.uk/	
Cricket	Anthony Axel-Berg		07766222951
Royal British Legion	Mr A Hill		810035
Soldiers, Sailors & Airman's Acc. (SSAFA)	Mr & Mrs A Hill		810035
Scottish & Southern Electricity			0800 072 7282
Thames Water			0800 316 9800
Non-emergency Police Contact			101
NHS 111 Service		(when less urgent than 999)	111
Environment Agency	Floodline—0845 9881188	General Enquiries -	03708 506 506
Bulk Refuse	(phone to book)		01285 623000
Highway Matters & Street Light Faults		highways@gloucestershire.gov.uk	08000 514 514
Kempsford Hand Bell Team (Beaubells)	Iris Lewis		01285 810770
Cotswold District Councillors	Steve Trotter	Steve.trotter@cotswold.gov.uk	07710 405323
	Stephen Andrews	Stephen.andrews@cotswold.gov.uk	01285 719924
Cotswold District Council			623000
Gloucestershire County Council			01452 425000
		Out of hours <u>Social Care issues only</u>	01452 614194
Gloucestershire County Councillor	Mr Dom Morris	Dominic.morris@gloucestershire.gov.uk	07500894702
Constituency MP	Sir Geoffrey Clifton Brown	cliftonbrowng@parliament.uk	01242 514551
Parish Council Clerk (see Parish Council page for Councillors)	Mrs Teresa Griffin	teresagriffin@kempsfordparishcouncil.net	0781 8626158
Newsletter items	Mrs Teresa Griffin	As above	0781 8626158
Kempsford Website		www.kempsford.net	
Kempsford Parish Council Website		www.kempsfordparishcouncil.net	

Kempsford

Online



'Kempsford Village'
'Kempsford Mums & Dads'